

# 3D FOOT SCANNING SYSTEM

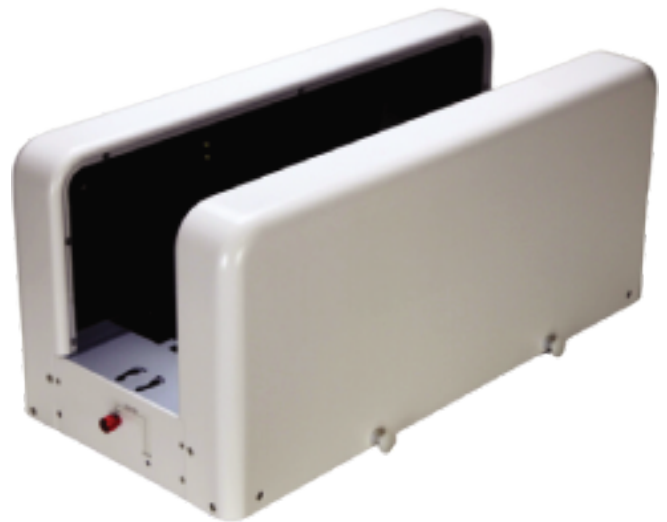
## GT GEORGE MAX

With the laser technology of the GT George MAX, you can capture the entire foot fully, partially, or even unloaded in all three dimensions.

The duration of the scan and the creation of a photo of the plantar view takes only a few seconds. Thanks to laser technology, you can capture your customers' feet with millimeter precision (with a maximum scanning height of 17.5 cm).

You will receive a detailed 3D representation of the feet, which you can directly present to your customer in our GP FootMeasure 3D software module.

The measurement data can be processed in the design software GP InsoleCAD & GP OptiCAD.



### ADVANTAGES:

- 3D capture of the entire foot (fully, partially, or unloaded)
- Including two side foot supports and a foot switch

### TECHNICAL REQUIREMENTS:

Scan Volume:	380L X 150W X 175H mm
Size:	625 L x 290 W x 275 H mm
Weight:	10.2 Kg
Load Capacity:	150 kg
Power Adapter:	AC 100-240V; DC 12V/5A
Scan Speed:	3.6s~13.3s depending on resolution
Data Transfer:	USB 2.0 / USB 3.0
Laser Class:	2

### SOFTWARE REQUIREMENTS:

Win 10/11 (64 bit)
Recommended Quad-Core CPU I7-6700HQ / 8 GB RAM
GP Manager V 7.3.7